

BCMC:

Riding on 25 Years of Tradition & Innovation

by SBC Staff

1980

Louisville, KY
Commonwealth
Convention Center

TPI sponsored the first BCMC show.
Charles F. Harnden and George F.
Eberle served as event co-chairs.

Before diving into this year's
BCMC Show Guide, take a few
minutes to reflect on where the show
has been over the last 25 years.

1981

Reno, NV
MGM Grand Hotel

1982

Louisville, KY
Commonwealth
Convention Center

1983

Anaheim, CA
Disneyland Hotel

1984

Marks the first year BCMC was co-sponsored
by TPI/WTCA. Even years from 1984-1990
were heavy equipment shows.

1985

Phoenix, AZ
Phoenix Hilton Hotel

THEME: *Marketing and Management
Strategies for a Changing Economy*

Odd years from 1985-1991 were Tabletop shows.

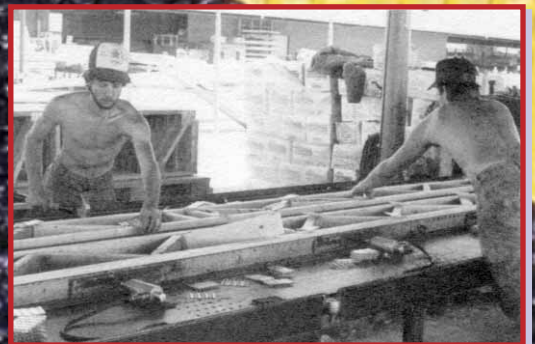
"Sold out" exhibit space included 33 exhibitors and
over 500 attendees. [Source: *WOODWORDS*]

“When I first started attending the show [in 1988 or '89], the automatic component saw was the most significant improvement in automation. That trend has continued: machinery is becoming much more robust and intelligent than ever before. The quality of today's equipment has been vastly improved and is made for a more rigorous production environment. Great strides have also been made in efficiency. Machines today can handle up to two or three times the parts as the first component saws.”

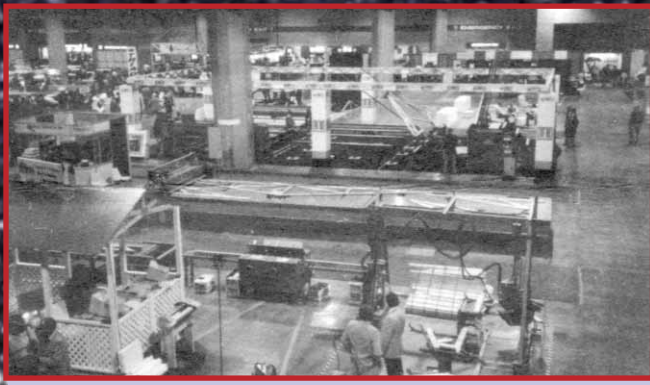
—Daniel Holland • 2004 WTCA President
Clearspan Components, Inc.
Meridian, MS



Sammy Davis, Jr.
BCMC 1987
Entertainment Headliner



BCMC 1987 Plant Tour



BCMC 1988 - Nashville Convention Center Exhibit Hall

1988

Nashville, TN
Stouffer Nashville Convention Center

THEME: *Systems Update*

Computed-controlled automation makes its debut.
 New record attendance set: close to 850.

[Source: *TPI News*]

1989

No show this year; BCMC switches from a fall show to a February show.

1990

Jacksonville, FL
Prime Osborne Convention Center

Attendees focus on fire retardant wood truss assemblies.
 The first CM roundtable is held to discuss insurance, workers' compensation and equipment.
 59 exhibitors

1991

San Antonio, TX
San Antonio Marriott River Center

THEME: *Strength and Unity* (Tabletop show)
 Educational session "How to Find the Eagle in a Flock of Turkeys" is presented by Mel Kleinman.

Continued on page 48



BCMC 1991 Keynote Speaker Dr. Paul Tiffany converses with a few attendees after his presentation on the U.S. economy.



BCMC 1991 - Opening the Exhibit Hall in San Antonio are (left to right) John Herring, Lee Vulgaris, Tom Manenti and Bob Mort.

1986

Louisville, KY
Commonwealth Convention Center

THEME: *Managing Risk in '86*

1987

Las Vegas, NV
Bally's - Las Vegas

THEME: *Growth through Excellence*
 Sammy Davis Jr. and Shecky Green headline attendee cocktail show.

// We are doing things today that we weren't doing—and couldn't do—25 years ago thanks to one piece of new technology: the computer...the entire industry has been dramatically transformed by the computer."

—Rip Rogers • 1989 WTCA President
Trussway, Ltd. • Spring, TX

1999

Kansas City, MO

H. Roe Bartle Hall

THEME: Solutions 2000

Exhibit space tops 57,000 square feet.

The show hosts over 1,200 attendees representing 425 component manufacturer companies.

2000

Milwaukee, WI

Midwest Express Convention Center

THEME: People Building the Future

Exhibitors exceed 100 (111) for the first time.



1992

Louisville, KY

Commonwealth Convention Center

THEME: A trade show with a touch of 'class'

Many more workshops and presentations are added for attendees: Erection & Bracing Techniques, Manufacturing Concepts for Profit Improvement, Quality Assurance, and Safety Concerns among others.

1993

Louisville, KY

Commonwealth Convention Center

THEME: Building the American Dream

First show sponsored solely by WTCA.

From this point forward, BCMC was a full equipment show. With 54 exhibitors, the show floor is sold out well before the opening.



1994

Louisville, KY

Commonwealth

Convention Center

THEME: Manufacturing with Pride

Attendance up 16 percent over previous year.



1995

Nashville, TN

Opryland Hotel

THEME: Connect with Technology

The Internet plays a role for the first time on the show floor.



// Around 1993 or 1994, the BCMC Committee and the WTCA Board made the decision to have a full show every year. There was a little bit of criticism for that; some people felt that we didn't have to have that. But if you look today, the show continues to grow. It went from a 30,000-square-foot show every other year to something that we should be very proud of. Moving BCMC to different parts of the country each year has also helped to increase interest."

—Richard Brown • 1999 WTCA President
Truss Systems, Inc. • Oxford, GA

IDEAS



To Build On

“Every year, I’m impressed by how much work the BCMC Committee and staff does to put it together. BCMC has grown so far and away from what it was in years past—it’s an amazing show. We’re taking responsibility for the direction of our industry, and it shows.”

—Mary Pat Keller • 2001 WTCA President
Gateway Building Components
Columbia, IL



2001

Louisville, KY
Kentucky International
Convention Center

THEME: *Ideas to Build On*
The BCMC Committee decides the show must go on in spite of 9/11 terrorist attacks.

2002

Columbus, OH
Greater Columbus
Convention Center

THEME: *Building a New Tomorrow*
Numerous format changes enhance the BCMC experience for exhibitors and attendees: targeted educational session, free lunch for attendees and an improved show floor layout.

2003

Phoenix, AZ
Phoenix Civic Plaza
THEME: *New Frontiers*
Farthest west BCMC travels since Las Vegas in 1987.

2004

Charlotte, NC
Charlotte Convention Center
THEME: *Revvin' Up the Component Industry*
Record number of new exhibitors: 30.

2005

Milwaukee, WI
Midwest Airlines Center
THEME: *Riding on Tradition and Innovation*
Read on for all of the exciting details about this year's record-breaking show. This year's Show Guide follows, with Exhibitor Profiles beginning on page 71. Enjoy!



1996

Louisville, KY
Commonwealth
Convention Center
THEME: *Discover the Change*

1997

Nashville, TN
Opryland Hotel
THEME: *Building Your Resources*
Truss Technician Training and WTCA QC version 3.0 is debuted at the show.

1998

Cincinnati, OH
Cincinnati Convention Center
THEME: *Tomorrow's Technology Today*



STRUCTURAL BUILDING COMPONENTS™

THE FUTURE OF FRAMING

www.sbcmag.info

Dear Reader:

Copyright © 2005 by Truss Publications, Inc. All rights reserved. For permission to reprint materials from SBC Magazine, call 608/310-6706 or email editor@sbcmag.info.

The mission of Structural Building Components Magazine (SBC) is to increase the knowledge of and to promote the common interests of those engaged in manufacturing and distributing of structural building components to ensure growth and continuity, and to be the information conduit by staying abreast of leading-edge issues. SBC will take a leadership role on behalf of the component industry in disseminating technical and marketplace information, and will maintain advisory committees consisting of the most knowledgeable professionals in the industry. The opinions expressed in SBC are those of the authors and those quoted solely, and are not necessarily the opinions of any of the affiliated associations (SBCC, WTCA, SCDA & STCA) .



6300 Enterprise Lane • Suite 200 • Madison, WI 53719
608/310-6706 phone • 608/271-7006 fax
www.sbcmag.info • admgr@sbcmag.info