



Wtca Update

BCSI Updates for 2006

Big changes are in store for the industry's handling, installing and bracing guide, BCSI, especially in the sections pertaining to temporary and permanent bracing.

by WTCA Staff

More than 53,600 copies of the BCSI 1-03 booklet have sold since its first printing in fall 2003. The BCSI booklet and the B-Series summary sheets have become a mainstay for the jobsite packages of most component manufacturers. In addition, many construction industry professionals rely on this publication as the premiere source for handling, installing and bracing information for building components on the jobsite. Most building codes, standards and guidelines of this nature are revised and improved on a continual basis and the BCSI booklet is no exception. Last year the WTCA Engineering & Technology Committee (E&T) made the decision to update the BCSI booklet for 2006.

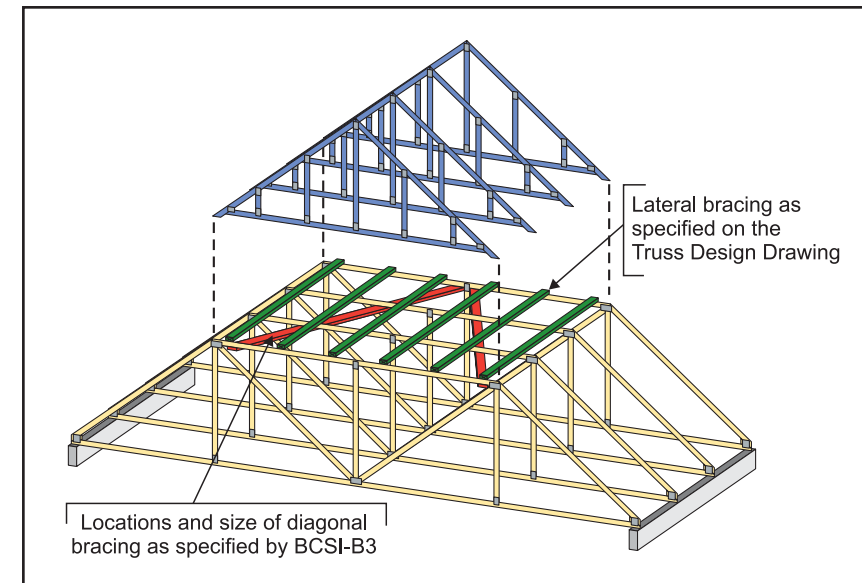
The plan is to complete the booklet revisions first and then develop new editions of the individual B-Series summary sheets. The revised booklet is slated to be available in summer 2006 and the summary sheets by fall 2006.

The most noticeable change to the booklet will be its size. Customer feedback has prompted it to be reformatted into an 8.5x11-inch size with a three-hole punch, while retaining the spiral bound pages.

From a content perspective, the changes are much more striking. The most extensive changes will occur in B2 and B3, on temporary and permanent bracing respectively. The B2 section will incorporate new information for handling truss bundles and delivering them to the plate line, hoisting and crane equipment, assembling field spliced and multi-piece trusses, and bracing of hip systems.

The B3 section is being expanded to become a comprehensive permanent bracing guide for the proper bracing of a series of side-by-side trusses with either similar or highly different web configurations. (The current version focuses on bracing for compression web members.) The plan is to provide standard industry permanent bracing details for lateral/diagonal bracing systems for webs, chords, gable end frames and piggy backs, to name a few. This may seem a drastic departure from the traditional industry position that truss manufacturers supply individual components, not systems of trusses for a roof or floor, and therefore are not responsible for permanent bracing systems design. In fact, that position still holds true, but it does not preclude the truss industry from providing building designers a starting point from which to base their permanent truss system bracing design. To that end, members of E&T have been collecting and reviewing CAD format bracing details from a wide variety of sources—engineers at truss manufacturing plants, at plate manufacturing companies and from independent building designers. The key details will be included in B3 and all the details we receive will be available for download on the Structural Details for CAD web page on the WTCA site (see **Support Docs** at www.sbcmag.info for a quick link).

This new perspective was developed when WTCA worked with the National Council of Structural Engineers Association (NCSEA) on a code change proposal for the IBC 2006. The topic of permanent bracing design has long been an area of concern between the two groups, and both parties wanted a smoother approach to design and responsibility. The resulting code change, S-165, was approved by the ICC in September 2005. (View this code change and others in **Support Docs**



Piggyback bracing is one example of the standard details that will be provided in the 2006 version of BCSI.

at www.sbcmag.info.) This change draws attention to the necessity of proper permanent bracing design of trusses and permits the use of "standard industry bracing details that conform with generally accepted engineering practice" for permanent bracing design. The agreement is that WTCA will provide the standard industry bracing details in the next revision of BCSI and also on its web site for download. The building designer remains responsible for determining the suitability of the details to any particular project, but B3 will give them a head start on specifying wood truss bracing details with the assurance that the truss industry has approved them in concept.

Stay tuned for the next version of BCSI! For more information on the availability of this document, visit www.sbcindustry.com. **SBC**

New WTCA Members

Acadiana Building Components, LLC
218 S Cushing
Kaplan, LA 70548
318/219-2677
Mr. Al Cannon

Bison Building Materials
4500 N Tenaya Way
Las Vegas, NV 89129
702/320-5340
Mr. Kasey Hansen

Deer Valley Components
PO Box 71310
Phoenix, AZ 85050-1006
602/445-4000
Mr. Brandon Hartman
Sponsor: Mr. Keith Azlin

Eminkay Trusses & Components
6871 Kings Ave W Ste A
Billings, MT 59106
406/651-5700
Mr. Michael Jorgensen

Leopoldo Osiris Chavez-Duran
528 W McMurray Blvd
Casa Grande, AZ 85222
520/426-9771
Mr. Leopoldo O. Chavez-Duran

Liberty Building Products LLC
PO Box 777
Grove Hill, AL 36451-0777
251/275-8666
Mr. Brian Raybon

Longhorn Truss LLC
2469 US Hwy 77
Lott, TX 76656-3502
254/584-2469
Mr. Chris Troyer
Sponsor: Mr. Thomas F. Whatley, II

Trussworks
75110 St Charles Pl Ste 11-A
Palm Desert, CA 92211-9067
760/341-2232
Mr. Jeff Larsen

For more information about WTCA membership, contact Anna (608/310-6719 or astamm@quallim.com) or visit www.sbcindustry.com. Listing as of April 7, 2006.

WTCA Board of Directors

Officers & Executive Committee Reps.

- **President:** Donald Groom • Stark Truss Co., Inc. • 330/478-2100 • don.groom@starktruss.com
- **President Elect/Treasurer:** Barry E. Dixon • True House, Inc. dba True Truss • 904/757-7500 • barry@truehouse.com
- **Secretary:** Robert J. Becht • Chambers Truss, Inc. • 772/465-2012 • bob@chamberstruss.com
- **Past President:** Kendall Hoyd • Idaho Truss & Component Co. • 208/888-5200 • kendallh@idahotruss.com
- **Kenneth M. Cloyd** • California Truss Co. • 909/657-7491 • kenc@caltruss.com
- **Dwight Hikel** • Shelter Systems Limited • 410/876-3900 • dwright@sheltersystems.com
- **Frank B. Klinger** • Mid-Valley Truss & Door Co. • 956/428-7090 • lfctfbk@aol.com

At-Large Representatives

- **Dean DeHoog** • Trussway - Central • 616/887-8264
- **Allen Erickson** • Cal-Asia Truss • 925/680-7701
- **Ben Hershey** • Alliance TruTruss, LLC • 602/252-1772
- **David Horne** • Universal Forest Products, Inc. • 800/476-9356
- **John A. Smith** • Foxworth-Galbraith Lumber Co. • 972/437-6100
- **Steven A. Spradlin** • Capital Structures Inc. • 479/783-8666
- **Mike Walsh** • Stock Components • 919/431-1000

Directors Representing Chapters

- **Keith Azlin** • U.S. Components, LLC • 520/882-3709
- **Bruce J. Bain** • Richco Structures • 920/336-9400
- **Michael Balliet, Jr.** • Bama Truss & Components • 205/669-4188
- **Priscilla J. Becht** • Chambers Truss, Inc. • 772/465-2012
- **Rick Cashman** • Florida Forest Products • 727/585-2067
- **Mark A. Casp** • Casmin, Inc. • 352/343-0680
- **David A. Denoncourt** • Tibo Lumber Truss Manufacturers • 603/796-2974
- **Jack Dermer** • American Truss Systems, Inc. • 281/442-4584
- **Simon Evans** • Bay Truss Inc. • 510/232-0937
- **James C. Finkenhoefler** • Truss Systems, Inc. • 770/787-8715
- **Joseph D. Hikel** • Shelter Systems Limited • 410/876-3900
- **John Hogan** • Vivco Components • 816/449-2161
- **John Huck** • Home Lumber Company • 303/791-3715
- **David W. Hughes** • Oregon Truss • 503/581-8787
- **Michael Karceski** • Atlas Components, Inc. • 815/332-4904
- **Ted Kolanko, P.E.** • 84 Components • 615/287-0184
- **Chris Lambert** • Southeastern Materials, Inc. • 704/983-1144
- **Glenn McClendon** • Sun State Components, Inc. • 702/657-1889
- **David Motter, P.E.** • Tri-County Truss • 360/757-8500
- **Richard P. Parrino** • Plum Building Systems • 515/327-0698
- **Michael Redmon** • Carolina Truss Systems, Inc. • 843/875-0550
- **Mark H. Rose** • Manning Building Supplies, Inc. • 904/268-8225
- **Timothy Rouch** • Gang-Nail Truss Co., Inc. • 559/651-2121
- **Gary Sartor** • Stone Truss Company, Inc. • 760/967-6171
- **Steven L. Stroder** • Carter-Lee Building Components Inc. • 317/834-5380
- **James M. Swain** • Carpenter Contractors of America • 239/437-1100
- **Terry Tontarski** • Fabco - Tontarski, Inc. • 315/782-5283
- **Dave Walstad** • U.S. Components, Inc. • 609/518-9759
- **Scott Ward** • Southern Components, Inc. • 318/687-3330
- **Stephen Yoder** • Stark Truss Co., Inc. • 330/478-2100

Associate Member Directors

- **Gary Dunn, P.E.** • Boise Building Solutions • 541/826-0200
- **Steve Hanek** • USP Structural Connectors • 507/364-5425
- **Charles C. Hoover, Jr., P.E.** • Alpine Engineered Products • 863/422-8685
- **Joe Kusar** • Tolleson Lumber Co., Inc. • 478/987-2105

STRUCTURAL BUILDING COMPONENTS™

THE FUTURE OF FRAMING

www.sbcmag.info

Dear Reader:

Copyright © 2006 by Truss Publications, Inc. All rights reserved. For permission to reprint materials from **SBC Magazine**, call 608/310-6706 or email editor@sbcmag.info.

The mission of **Structural Building Components Magazine (SBC)** is to increase the knowledge of and to promote the common interests of those engaged in manufacturing and distributing of structural building components to ensure growth and continuity, and to be the information conduit by staying abreast of leading-edge issues. SBC will take a leadership role on behalf of the component industry in disseminating technical and marketplace information, and will maintain advisory committees consisting of the most knowledgeable professionals in the industry. The opinions expressed in SBC are those of the authors and those quoted solely, and are not necessarily the opinions of any of the affiliated associations (SBCC, WTCA, SCDA & STCA).



6300 Enterprise Lane • Suite 200 • Madison, WI 53719
608/310-6706 phone • 608/271-7006 fax
www.sbcmag.info • admgr@sbcmag.info