

## Wood Truss Systems inc.

MANUFACTURERS' REPRESENTATIVES

Truss and wood component machinery experts for over 30 years. We can help you enter the component industry or refine your existing facility with custom equipment solutions featuring:

### New & Used

- ▲ Truss Production Equipment
- ▲ Wall Panel Framing Equipment
- ▲ Automatic & Manual Cutting Equipment: Component, Radial Arm, Linear Single Blade Saws
- ▲ Plant Layouts / Production Consultants
- ▲ Automated Jigging Systems
- ▲ Automated Measuring Devices
- ▲ Replacement Production Surfaces

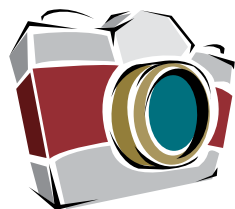
*Count on effective, economical and timely solutions.*

[www.WoodTrussSystems.com](http://www.WoodTrussSystems.com)

888.288.WTSI (9874)



For reader service, go to [www.sbcmag.info/wts.htm](http://www.sbcmag.info/wts.htm).



## Parting Shots

Share your stories and photos with us! Send submissions to [partingshots@sbcmag.info](mailto:partingshots@sbcmag.info).



When SBCA's West Florida Chapter says they have an annual tradition, they really mean it. For the past 24 years, the chapter has put on an educational event for building officials. Each fall, building officials and inspectors, plans examiners, and local architects and engineers join the chapter in a fantastic lunch and learn session. The free event includes educational seminar with CEU credit, truss testing demonstration and lunch. This year's class was the Component Technology Workshop (CTW) on Inspection of Installed Wood Trusses. However, the "fun" part was testing a truss to the limit, when the guests are asked to guess when the truss will fail.

Throughout the years, the chapter has shown what it takes to break field-repaired trusses, trusses with and without bracing, and additional demonstrations that show the strength of structural building components. The feedback from West Florida is undeniable—great job, guys! **SBC**

## Serving the Truss Industry Since 1987

New & Used Models in Stock



For over 20 years, Lakeside Trailer has led the way in the component trailer industry with innovative ideas to assure your delivery operations remain efficient in today's competitive market. With more than 1700 truss trailers to our credit, Lakeside has perfected ways to reduce or eliminate your transportation concerns.

# LAKESIDE

TRAILER MANUFACTURING, INC.

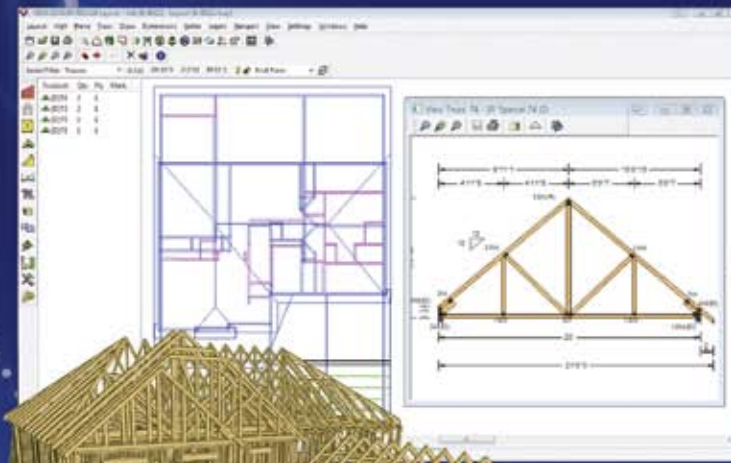
573/736-2966 • 573/736-5515 fax  
[www.rollerbed.com](http://www.rollerbed.com) • [lee@rollerbed.com](mailto:lee@rollerbed.com)

For reader service, go to [www.sbcmag.info/lakeside.htm](http://www.sbcmag.info/lakeside.htm).



THE KOSKOVICH COMPANY  
 Automation that works.™

# Connections for your digital life



These days, the construction industry has never been more ready for new ways to save time and money. Seems everyone is looking for any advantage to help win more bids and insure a profit. While it is true that optimizing current systems and software will help in smaller ways, for a bigger impact we will have to expand our industry's reach. What's needed is a fresh perspective, from a company progressive enough to be

involved in every major part of the construction industry - with the vision and resources to re-align existing business tools and create the missing links to tie everything together - so that a real revolution can take place.

By connecting all the parts, and all the players, with powerful new software tools, that easily communicate ideas up and down the value stream - ITW Building Components Group is building new ways to share knowledge, not just data!

See how ITW BCG helps you connect all the dots - from the first design step, to engineering, to fabrication and beyond!

Watch the ITW BCG presentation at [www.itwbcg.com/software](http://www.itwbcg.com/software)

## ITW Building Components Group

800.735.8055 | [www.itwbcg.com](http://www.itwbcg.com)

- |   |                                       |                                 |                              |                              |                                |                               |                                 |                              |
|---|---------------------------------------|---------------------------------|------------------------------|------------------------------|--------------------------------|-------------------------------|---------------------------------|------------------------------|
| Truss Software - Engineering - Connectors | Truss Cutting & Fabrication Equipment | Wall Panel Software & Equipment | Canadian Products & Services | Trimmable Floor Truss System | Cold-formed Steel Truss System | Architectural Design Software | Design & Manufacturing Software | Wall Panel Fastening Systems |
|---|---------------------------------------|---------------------------------|------------------------------|------------------------------|--------------------------------|-------------------------------|---------------------------------|------------------------------|



- |  |   |   |  |   |  |  |                                      |   |
|--|---|---|--|---|--|--|--------------------------------------|---|
| Connector Division<br>800.521.9790<br>itwbcg.com | Alpine Equipment<br>800.755.6005<br>alpineequip.com | Intelligent Building Systems<br>866.204.8046<br>intelbuildsys.com | Alpine Systems<br>905.417.2766<br>alpineways.com | SpaceJoist TE<br>800.238.8678<br>spacejoist.com | TrusSteel<br>888.565.9181<br>trussteel.com | Ameri-CAD VisionREZ<br>972.747.7880<br>visionrez.com | hsbCAD<br>514.428.1444<br>hsbcad.com | Panel Fastening Systems<br>888.726.3577<br>itwpls.com |
|--|---|---|--|---|--|--|--------------------------------------|---|

For reader service, go to [www.sbcmag.info/itw.htm](http://www.sbcmag.info/itw.htm)



# STRUCTURAL BUILDING **COMPONENTS**<sup>TM</sup>

THE FUTURE OF FRAMING

[www.sbcmag.info](http://www.sbcmag.info)

Dear Reader:

Copyright © 2010 by Truss Publications, Inc. All rights reserved. For permission to reprint materials from **SBC Magazine**, call 608/310-6706 or email [editor@sbcmag.info](mailto:editor@sbcmag.info).

The mission of **Structural Building Components Magazine (SBC)** is to increase the knowledge of and to promote the common interests of those engaged in manufacturing and distributing of structural building components to ensure growth and continuity, and to be the information conduit by staying abreast of leading-edge issues. SBC will take a leadership role on behalf of the component industry in disseminating technical and marketplace information, and will maintain advisory committees consisting of the most knowledgeable professionals in the industry. The opinions expressed in SBC are those of the authors and those quoted solely, and are not necessarily the opinions of any affiliated association (SBCA) .



6300 Enterprise Lane • Suite 200 • Madison, WI 53719  
608/310-6706 phone • 608/271-7006 fax  
[www.sbcmag.info](http://www.sbcmag.info) • [admgr@sbcmag.info](mailto:admgr@sbcmag.info)