



Parting Shots

Share your stories and photos with us! Send submissions to partingshots@sbcmag.info.

Wall Panel Opportunities Come In Many Sizes.

Whatever your opportunity, we can custom-build the equipment that will help you meet it. Whether it's a 16' sheathing station or a 70' squaring table like the one we recently shipped to a Canadian plant. Custom equipment to fit your circumstance provides manufacturing efficiencies to make your products competitive. In tight markets where you need to look at everything, the answers will be in the small details that add up to controlling your costs.

These machines were custom built to fit each customer's needs in their plants:



- **Wall Framers**
 - Telescoping arms for variable wall height
 - No "step over" mechanisms to trip workers
 - Pop up skate conveyors for easy wall transfer



- **Combination Table - frame, square & sheath in one table**
 - Telescoping arms for variable wall height
 - 2x4 or 2x6 wall capability
 - Manual or optional powered tool bridge drive



- **Single or Dual Tool Beam Sheathing Bridges**
 - 2x4 or 2x6 capability
 - Staple or nail options, optional edge stitcher
 - Manual or optional powered tool bridge drive



• Custom built 95 feet of expanded wall panel capability with Dual Tool Beam and Dual Top & Bottom Nailers (builds up to 76' wall)



For Information
866.726.7587 or www.panplus.com

For reader service, go to www.sbcmag.info/panelsplus.htm



A new water facility in West Brampton, Ontario was recently completed with long-span cold-formed steel (CFS) trusses courtesy of component manufacturer VanderWal Homes & Commercial Group. The West Brampton Reservoir pumping station shown here is situated west of Toronto in an area dominated by agricultural structures, said sales and marketing coordinator Alex McGillivray.

The roof of the reservoir was designed with three CFS truss systems that together form the barrel shape characteristic of barns. "The idea was for the style to match the surrounding buildings so it won't stick out as much," he said. Two sets of mono-slope trusses span each side of the 144' long building. A full structural clear-span truss section with 32, 64' trusses form the peak. The roof system was ground-assembled and sheathed, and then hoisted by crane.

McGillivray said when the company formed about ten years ago, cold-formed steel was a relatively new building material in Canada. "The product has become so much more accepted in commercial applications that we eventually added pre-insulated CFS wall panels and floors to provide complete turnkey systems." **SBC**



THE KOSKOVICH COMPANY
Automation that works.™

LINDSTROM

REACH FOR EXCELLENCE

Take Your Plant to New Heights with SCORE



"In order to succeed, our customers need to know they can count on us to provide what's needed. Working with SBCA and becoming SCORE certified proves we are committed to excellence."

- Steve Kennedy, Engineer/Training Manager, Lumber Specialties

Set your company apart with SCORE's certification program that incorporates all of SBCA's education and training programs - helping you implement cost-effective industry best practices. Learn more about options and how to get started at www.sbcindustry.com/score.php.



SCORE Elite

ProBuild Manufacturing

www.probuild.com

- | | | |
|-------------------|-------------------|-------------------|
| Anchorage, AK | Pooler, GA | Clackamas, OR |
| Big Lake, AK | Hawarden, IA | Klamath Falls, OR |
| Chugiak, AK | New Hampton, IA | Morrisville, PA |
| Kenai, AK | Indianapolis, IN | Mitchell, SD |
| Phoenix, AZ | Valley Center, KS | Buda, TX |
| National City, CA | Dry Ridge, KY | Carrollton, TX |
| Visalia, CA | Grand Rapids, MI | Mercedes, TX |
| Dolores, CO | Wadena, MN | West Point, VA |
| Longmont, CO | Albemarle, NC | Auburn, WA |
| Lady Lake, FL | Albuquerque, NM | Walla Walla, WA |
| Milton, FL | Berlin, NJ | West Richland WA |
| Plant City, FL | Kingston, NY | Spokane, WA |
| Norcross, GA | Delaware, OH | De Pere, WI |

Shelter Systems Limited

www.sheltersystems.com • Westminster, MD

Sun State Components of Nevada, Inc.

www.sunstatenv.com • North Las Vegas, NV

SCORE Leaders

Dakota Craft Truss

www.dakotacraft.com
Rapid City, SD

Lumber Specialties

www.lbrspec.com
Dyersville, IA
Story City, IA

Plum Building Systems, LLC

www.plumbuildingsystemsinc.com
West Des Moines, IA

SCORE Achievers

Capital Structures

www.capstructures.com
Fort Smith, AR

Latco Structural Components

www.latcoinc.com
Lincoln, AR

Tri-County Truss, Inc.

www.tricountytruss.com
Burlington, WA

True House, Inc.

www.truehouse.com
Jacksonville, FL

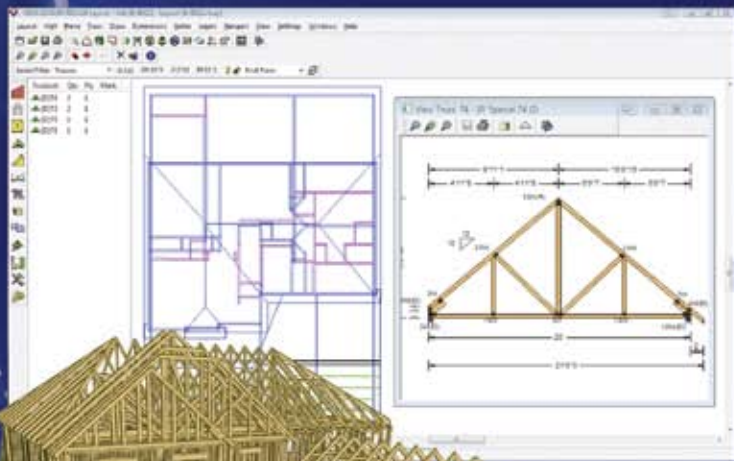
Truss Craft

www.dakotacraft.com
Cheyenne, WY

Truss Systems, Inc.

www.trussystemsinc.com
Oxford, GA

Connections for your digital life



These days, the construction industry has never been more ready for new ways to save time and money. Seems everyone is looking for any advantage to help win more bids and insure a profit. While it is true that optimizing current systems and software will help in smaller ways, for a bigger impact we will have to expand our industry's reach. What's needed is a fresh perspective, from a company progressive enough to be

involved in every major part of the construction industry - with the vision and resources to re-align existing business tools and create the missing links to tie everything together - so that a real revolution can take place.

By connecting all the parts, and all the players, with powerful new software tools, that easily communicate ideas up and down the value stream - ITW Building Components Group is building new ways to share knowledge, not just data!

See how ITW BCG helps you connect all the dots - from the first design step, to engineering, to fabrication and beyond!

Watch the ITW BCG presentation at www.itwbcg.com/software

ITW Building Components Group

800.735.8055 | www.itwbcg.com

Truss Software - Engineering - Connectors	Truss Cutting & Fabrication Equipment	Wall Panel Software & Equipment	Canadian Products & Services	Trimable Floor Truss System	Cold-formed Steel Truss System	Architectural Design Software	Design & Manufacturing Software	Wall Panel Fastening Systems
								
Connector Division 800.521.9790 itwbcg.com	Alpine Equipment 800.755.6005 alpineequip.com	Intelligent Building Systems 866.204.8046 intelbuildsys.com	Alpine Systems 905.417.2766 alpinetsys.com	SpaceJoist TE 800.238.8678 spacejoist.com	TrusSteel 888.565.9181 trussteel.com	Ameri-CAD VisionREZ 972.747.7880 visionrez.com	hsbCAD 514.428.1444 hsbcad.com	Panel Fastening Systems 888.726.3577 itwtps.com

STRUCTURAL BUILDING COMPONENTS™

THE FUTURE OF FRAMING

www.sbcmag.info

Dear Reader:

Copyright © 2010 by Truss Publications, Inc. All rights reserved. For permission to reprint materials from **SBC Magazine**, call 608/310-6706 or email editor@sbcmag.info.

The mission of **Structural Building Components Magazine (SBC)** is to increase the knowledge of and to promote the common interests of those engaged in manufacturing and distributing of structural building components to ensure growth and continuity, and to be the information conduit by staying abreast of leading-edge issues. SBC will take a leadership role on behalf of the component industry in disseminating technical and marketplace information, and will maintain advisory committees consisting of the most knowledgeable professionals in the industry. The opinions expressed in SBC are those of the authors and those quoted solely, and are not necessarily the opinions of any affiliated association (SBCA) .



6300 Enterprise Lane • Suite 200 • Madison, WI 53719
608/310-6706 phone • 608/271-7006 fax
www.sbcmag.info • admgr@sbcmag.info